

1923

**SURVEY OF INDIA**

**SPECIMENS OF MAP DRAWING**

526.9  
594

Survey of India  
2742  
SPECIMENS OF

MAP DRAWING

FOR DEPARTMENTAL USE.

ISSUED UNDER THE DIRECTION OF

LIEUT.-COLONEL F. B. LONGE, R.E.,

SURVEYOR-GENERAL OF INDIA.)

1904.

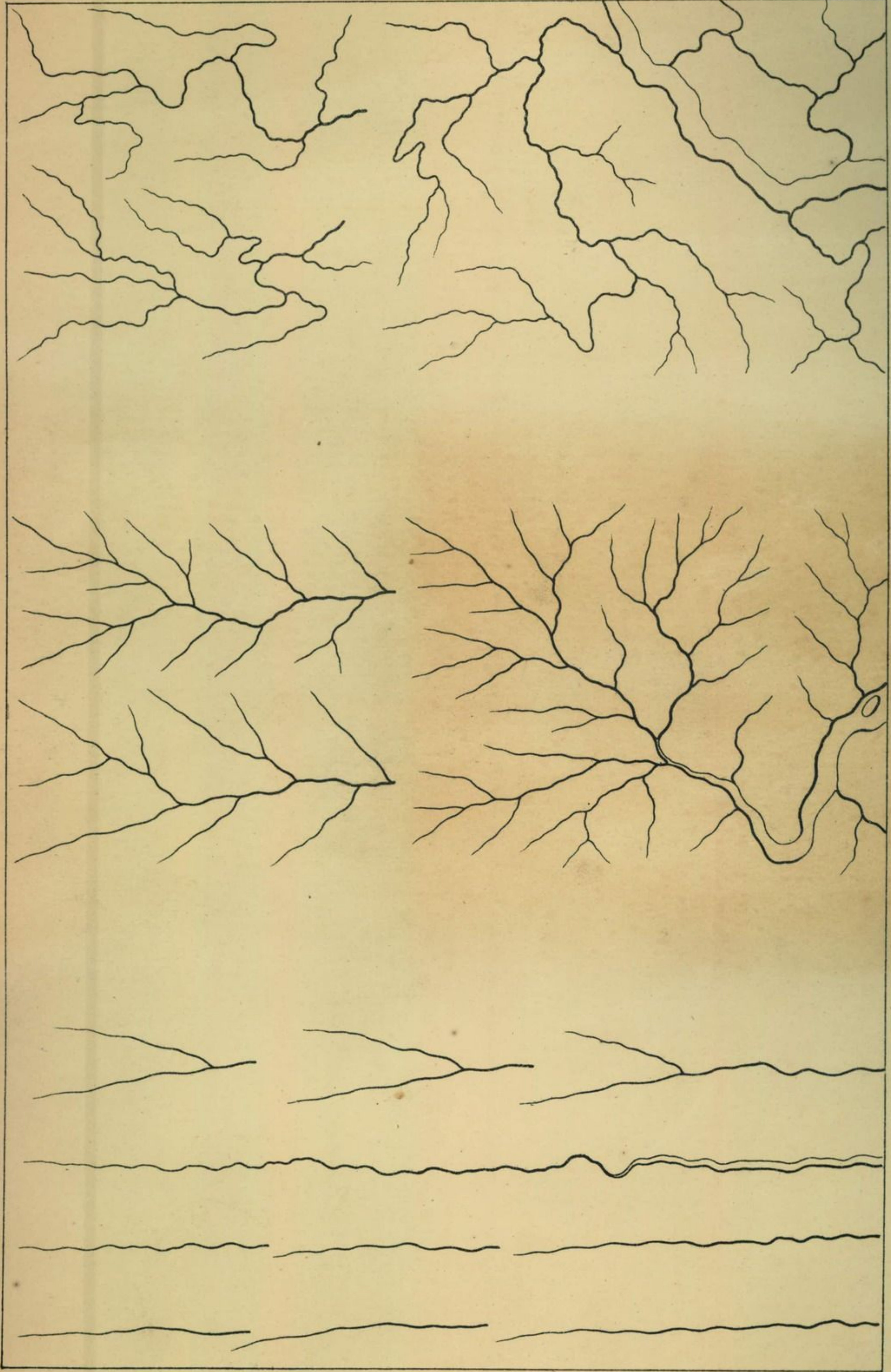
NOTE FOR GUIDANCE.

These specimens have been for the most part taken from existing Departmental maps, and are intended to serve as a guide to the various styles of drawing employed on our maps. They are not, however, to be regarded as a guide for conventional signs, or for the type to be used, and the attention of all draftsmen and others is invited to the following points requiring special attention.

In order to obtain successful results by photosincography the lines must be sharp and clean, and the ink used must be perfectly black. Lines or names which are gray or in any way faint or broken, entail much labour in touching up on the plates. Officers should bear in mind that such errors, which can be rectified on paper in a comparatively short time, may, if left untouched, require hours of laborious reverse brush work on the plates. As the photographic lens will show up defects in drawing not visible to the naked eye, before submitting any map for publication it should be examined under a magnifying glass, and any lines which appear faint or broken should be strengthened. It must also be borne in mind that the process of photosincography tends to thicken up all detail, and therefore all lines should be drawn somewhat finer than it is intended they shall appear when reproduced.

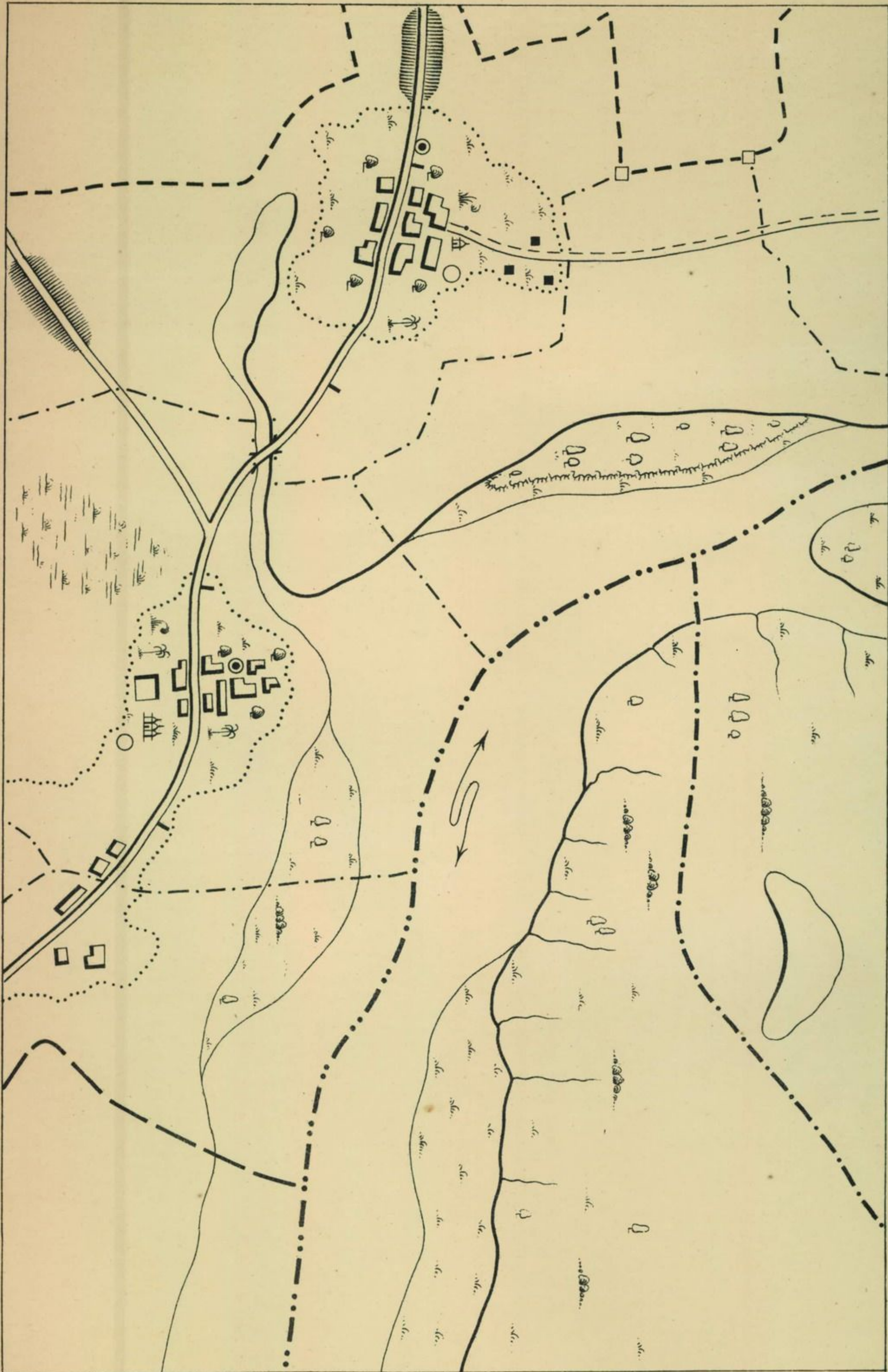
All maps should be kept covered up as much as possible, only the portion actually required being left exposed, and every effort made to keep the paper clean. Avoid erasures as much as possible.

ELEMENTARY OUTLINE FOR REDUCTION TO  $\frac{1}{2}$  SCALE.



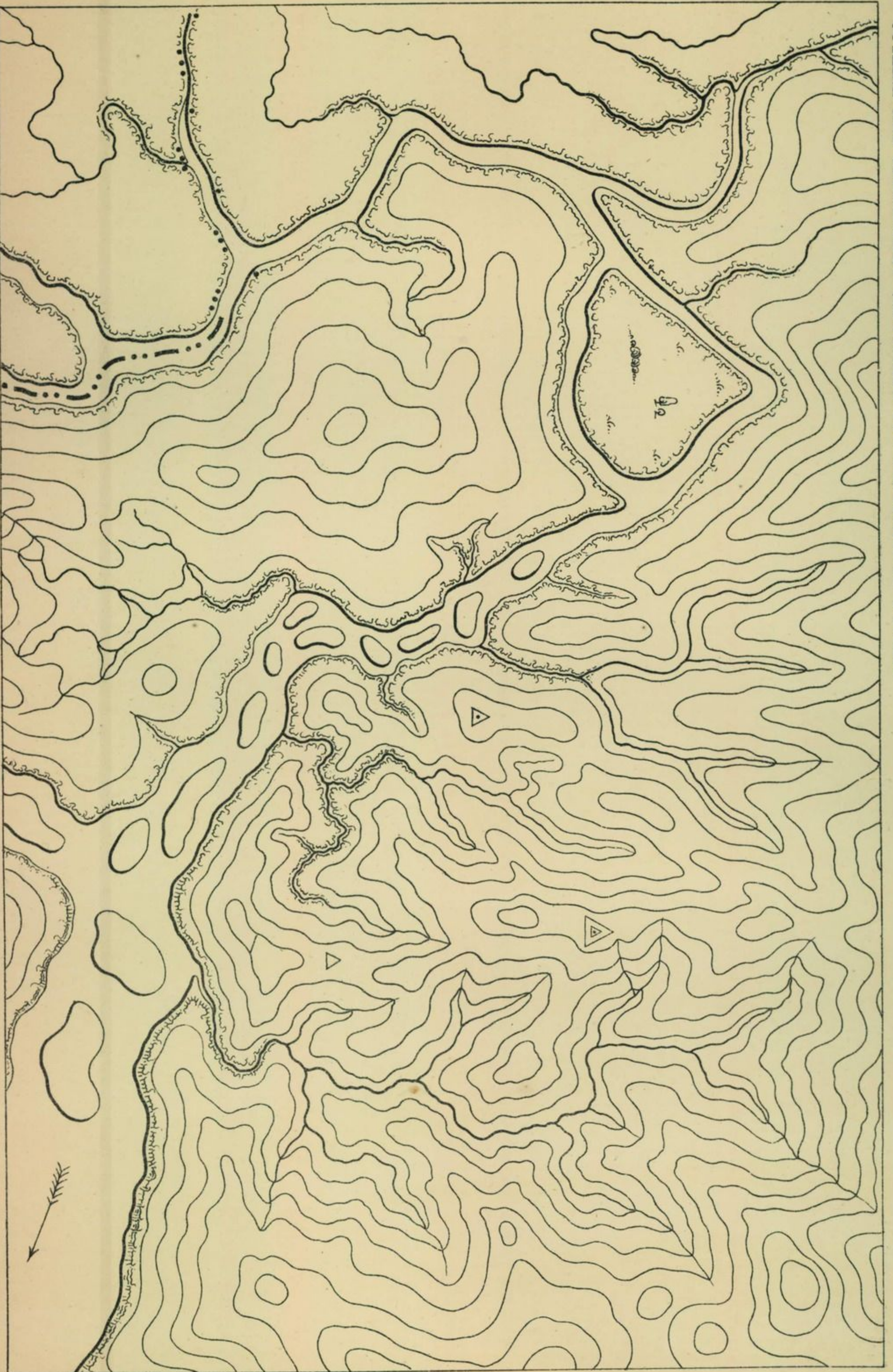
- N. B. 1 Ink used must be perfectly black and all lines must be sharp and clean.  
2 All drawing must be slightly finer than this copy.  
3 Completed work must be examined under a magnifying glass, and any gray or broken lines touched up.  
4 Keep surface of your paper covered as much as possible. Avoid erasures and keep your paper clean.

(923)



- N. B.
- 1 Ink used must be perfectly black and all lines must be sharp and clean.
  - 2 All drawing must be slightly finer than this copy.
  - 3 Completed work must be examined under a magnifying glass, and any gray or broken lines touched up.
  - 4 Keep surface of your paper covered as much as possible. Avoid erasures and keep your paper clean.

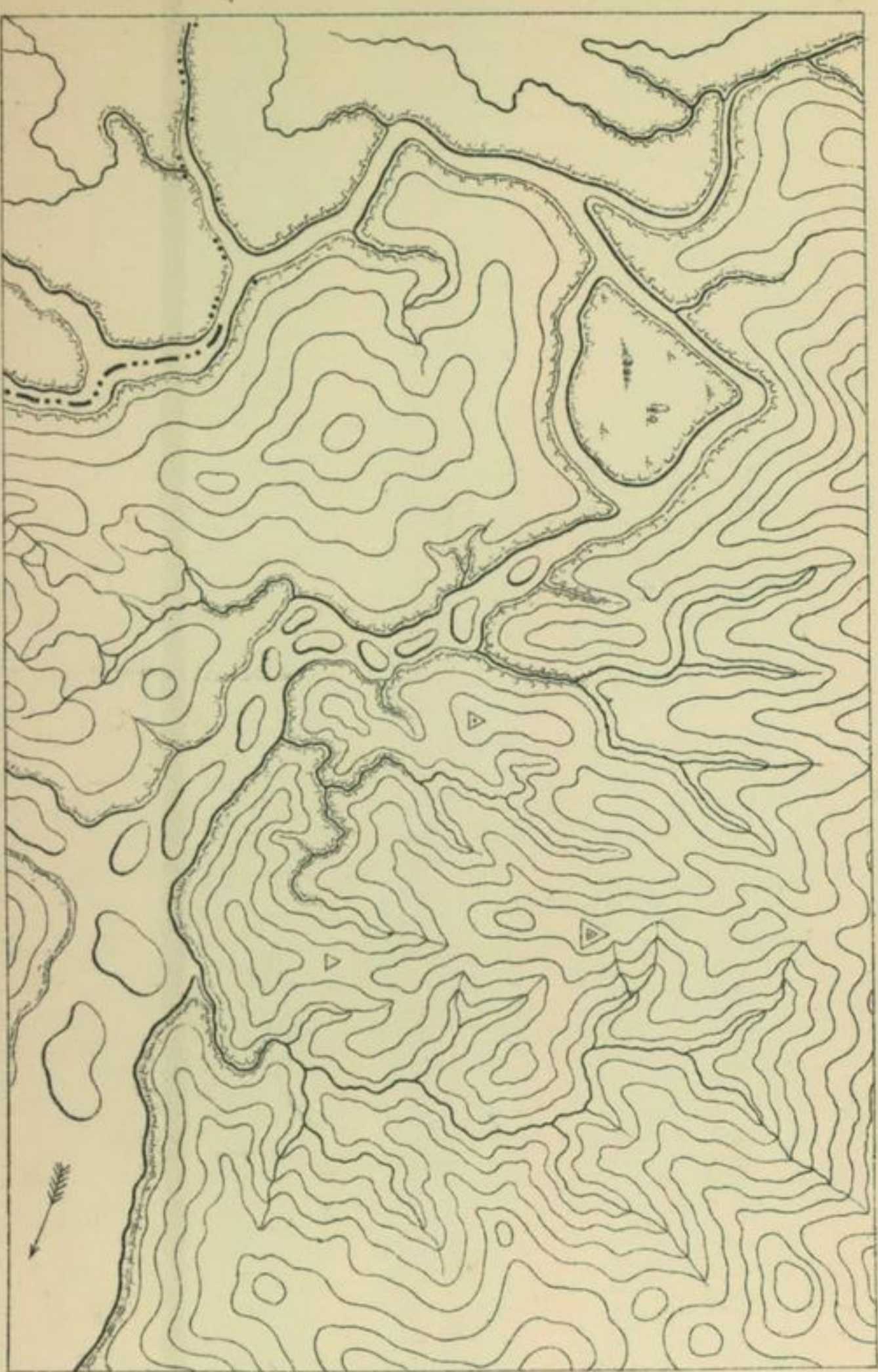
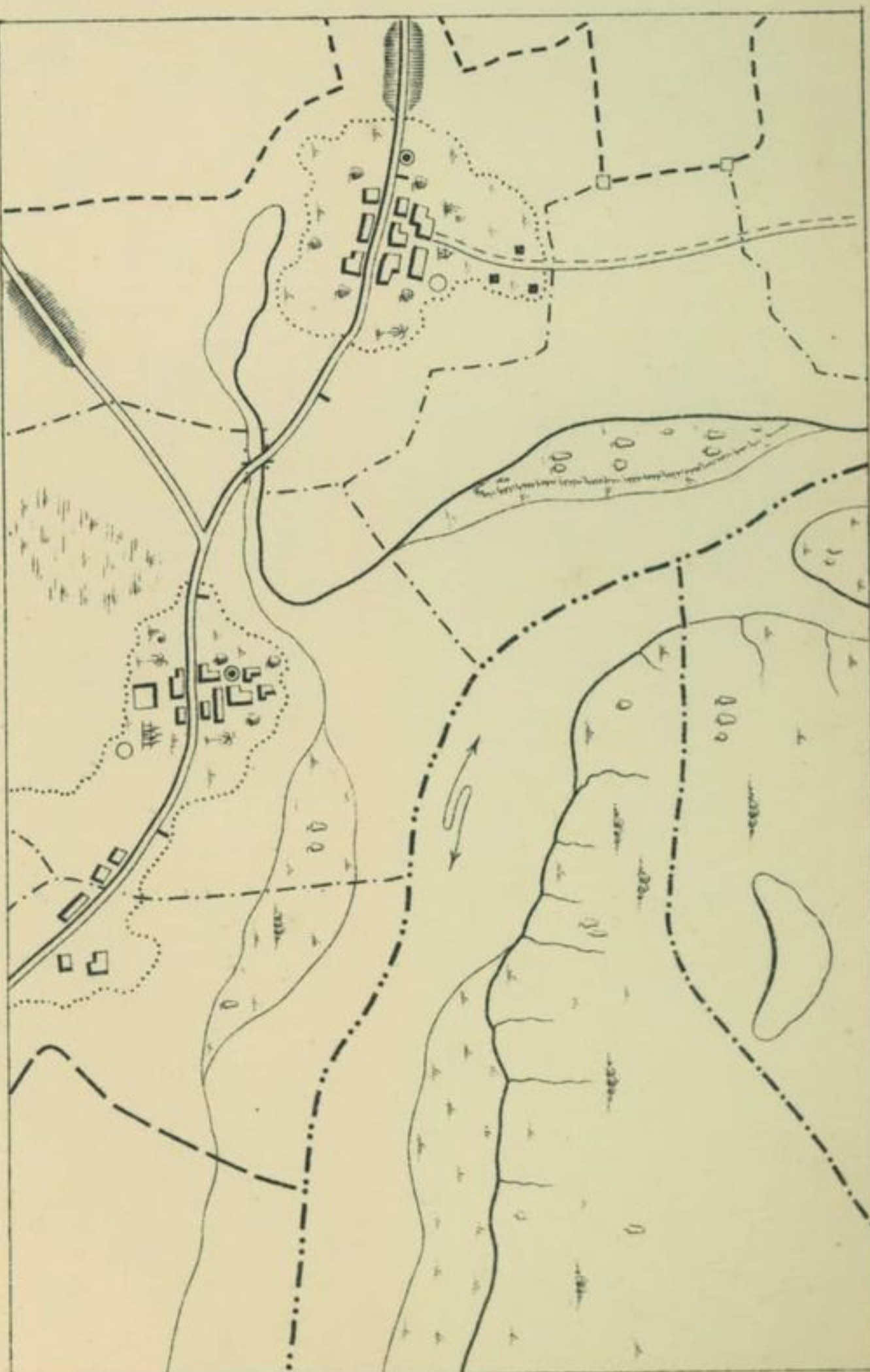
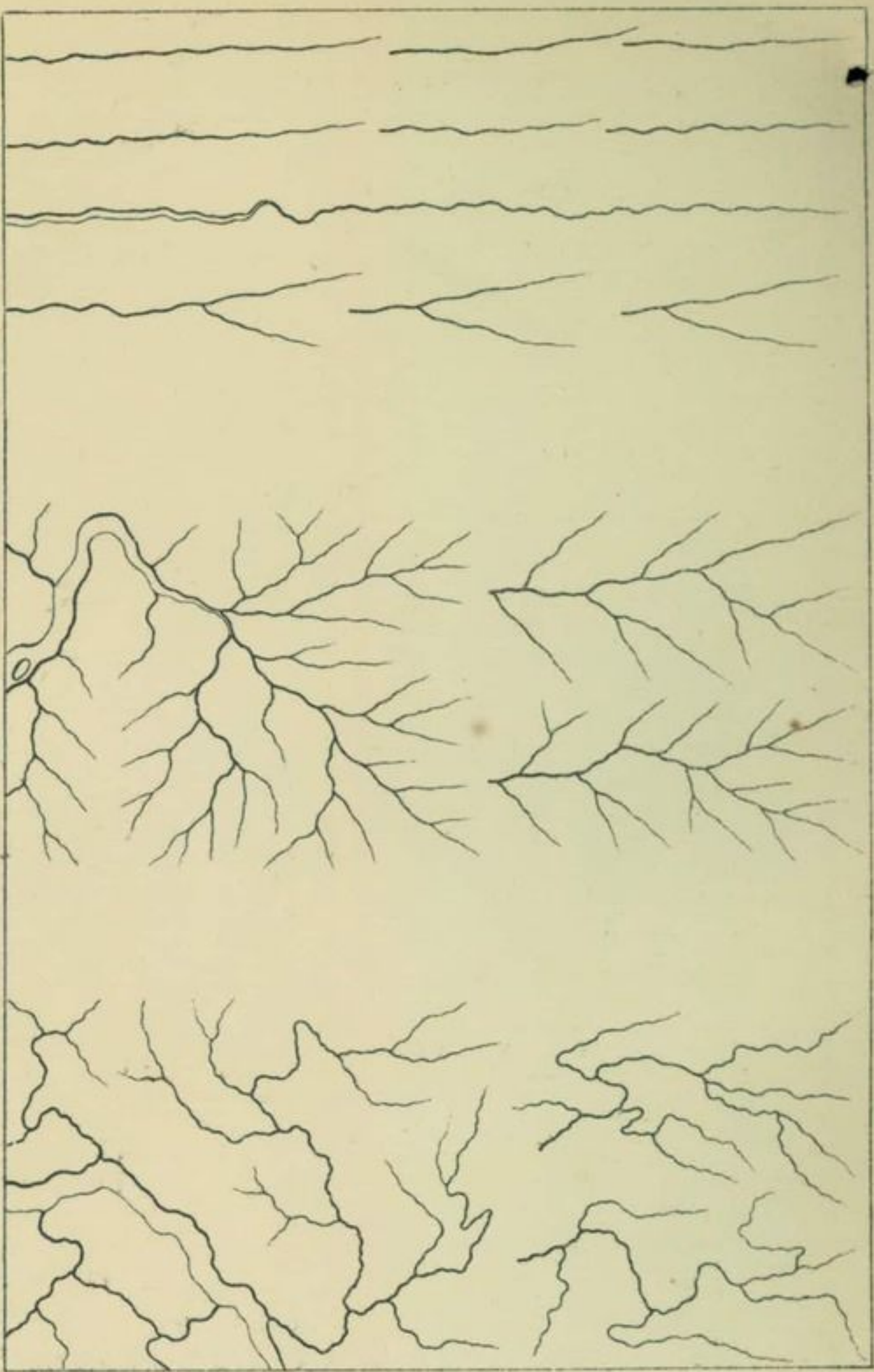
OUTLINE AND ELEMENTARY CONTOURING FOR REDUCTION TO 1/2 SCALE.



- N. B.
- 1 Ink used must be perfectly black and all lines must be sharp and clean.
  - 2 All drawing must be slightly finer than this copy.
  - 3 Completed work must be examined under a magnifying glass, and any gray or broken lines touched up.
  - 4 Keep surface of your paper covered as much as possible. Avoid erasures and keep your paper clean.

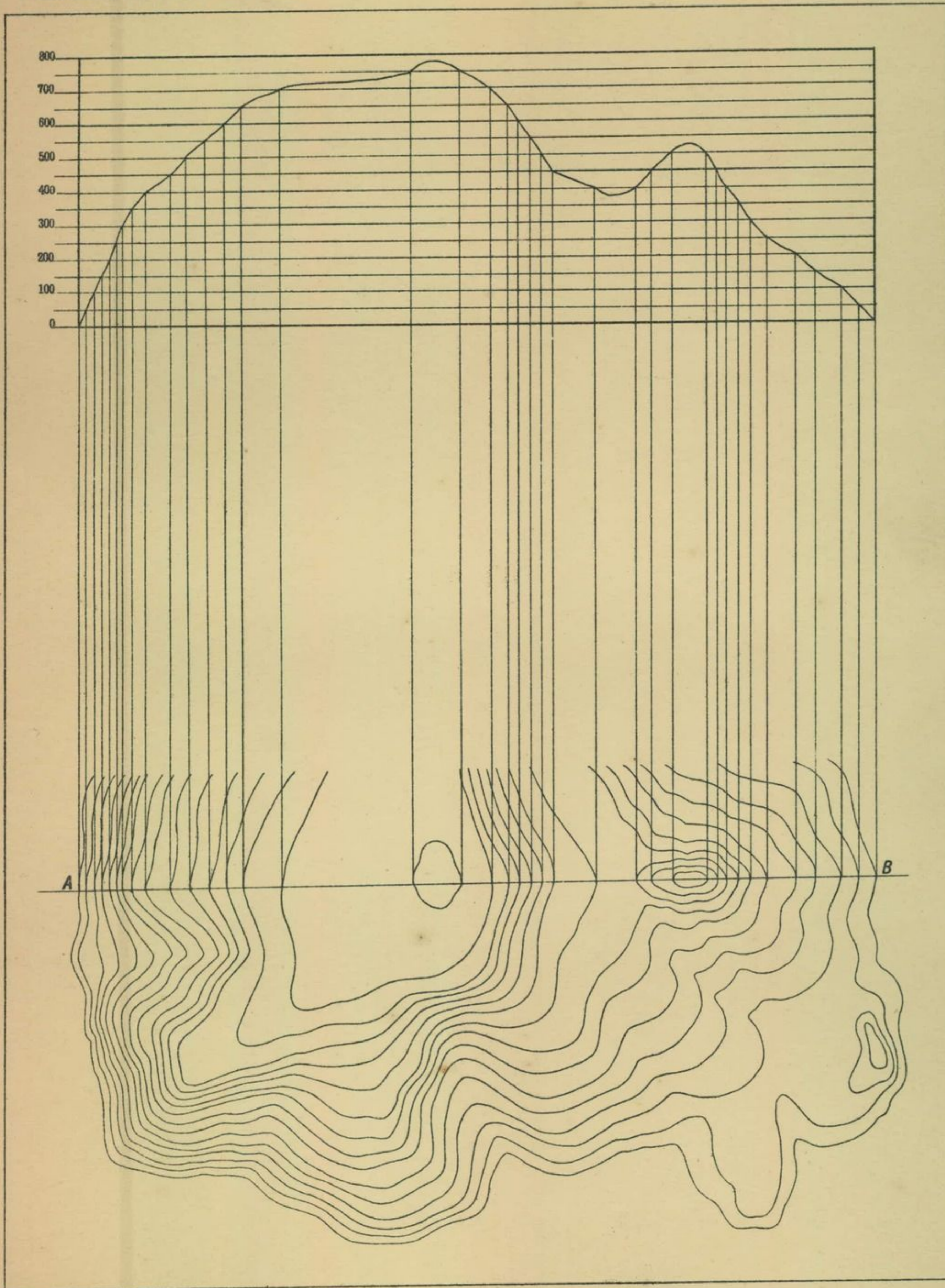


- N. B.
- 1 Ink used must be perfectly black and all lines must be sharp and clean.
  - 2 All drawing must be slightly finer than this copy.
  - 3 Completed work must be examined under a magnifying glass, and any gray or broken lines touched up.
  - 4 Keep surface of your paper covered as much as possible. Avoid erasures and keep your paper clean.



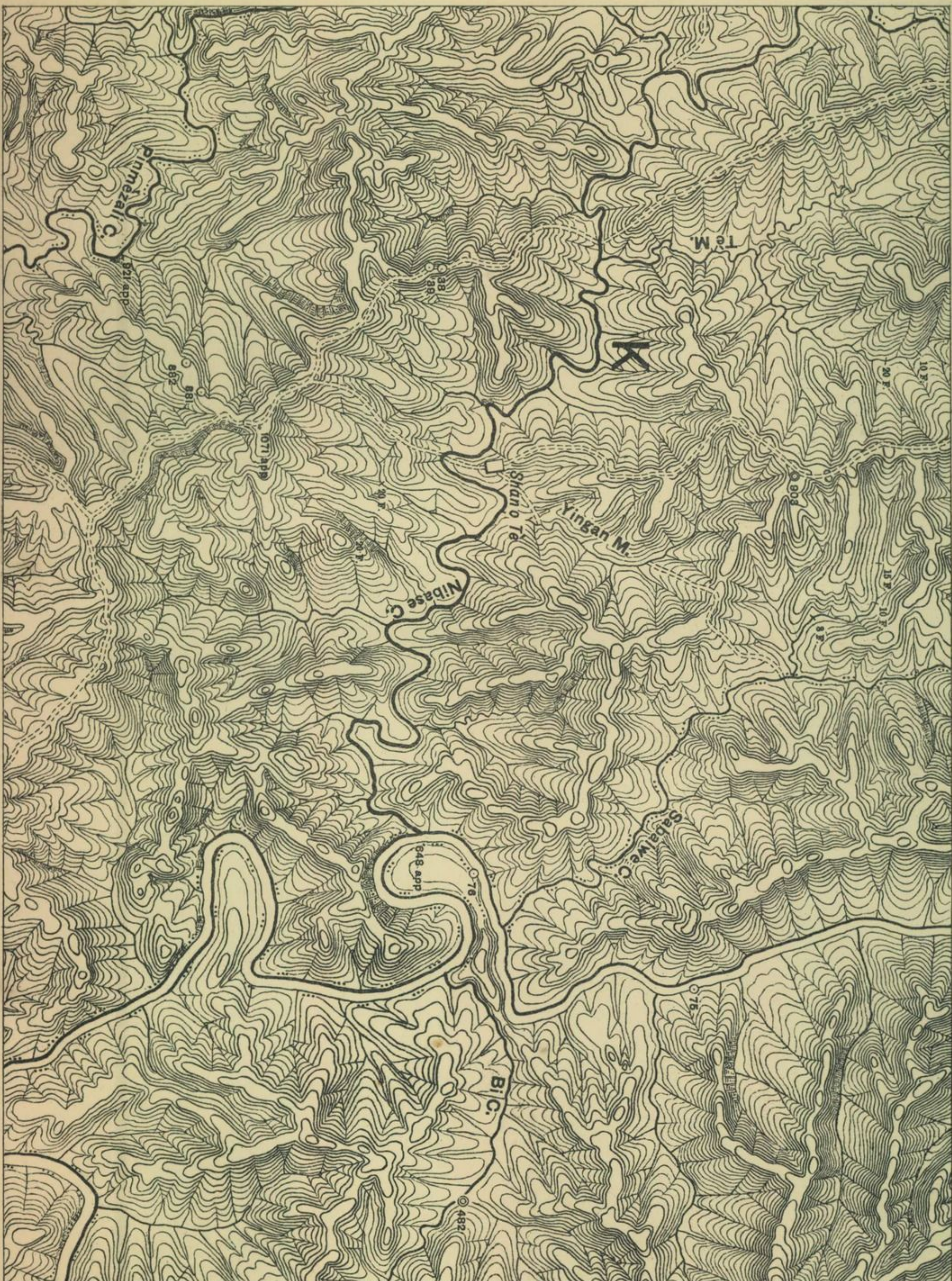
- N. 8.—1. Ink used must be perfectly black and all lines must be sharp and clean.  
2. All drawing must be slightly finer than this copy.  
3. Completed work must be examined under a magnifying glass, and any gray or broken lines touched up.  
4. Keep surface of your paper covered as much as possible. Avoid erasures and keep your paper clean.  
5. The type on this specimen is not to be taken as a guide to that now used on fair maps.

EXPLANATION OF CONTOURS.



- N. B.—1. Ink used must be perfectly black and all lines must be sharp and clean.  
 2. All drawing must be slightly finer than this copy.  
 3. Completed work must be examined under a magnifying glass, and any gray or broken lines touched up.  
 4. Keep surface of your paper covered as much as possible. Avoid erasures and keep your paper clean.  
 5. The type on this specimen is not to be taken as a guide to that now used on fair maps.





- N. B.—1. Ink used must be perfectly black and all lines must be sharp and clean.  
2. All drawing must be slightly finer than this copy.  
3. Completed work must be examined under a magnifying glass, and any gray or broken lines touched up.  
4. Keep surface of your paper covered as much as possible. Avoid erasures and keep your paper clean.  
5. The type on this specimen is not to be taken as a guide to that now used on fair maps.



- N. B.—1. Ink used must be perfectly black and all lines must be sharp and clean.  
2. All drawing must be slightly finer than this copy.  
3. Completed work must be examined under a magnifying glass, and any gray or broken lines touched up.  
4. Keep surface of your paper covered as much as possible. Avoid erasures and keep your paper clean.  
5. The type on this specimen is not to be taken as a guide to that now used on fair maps.



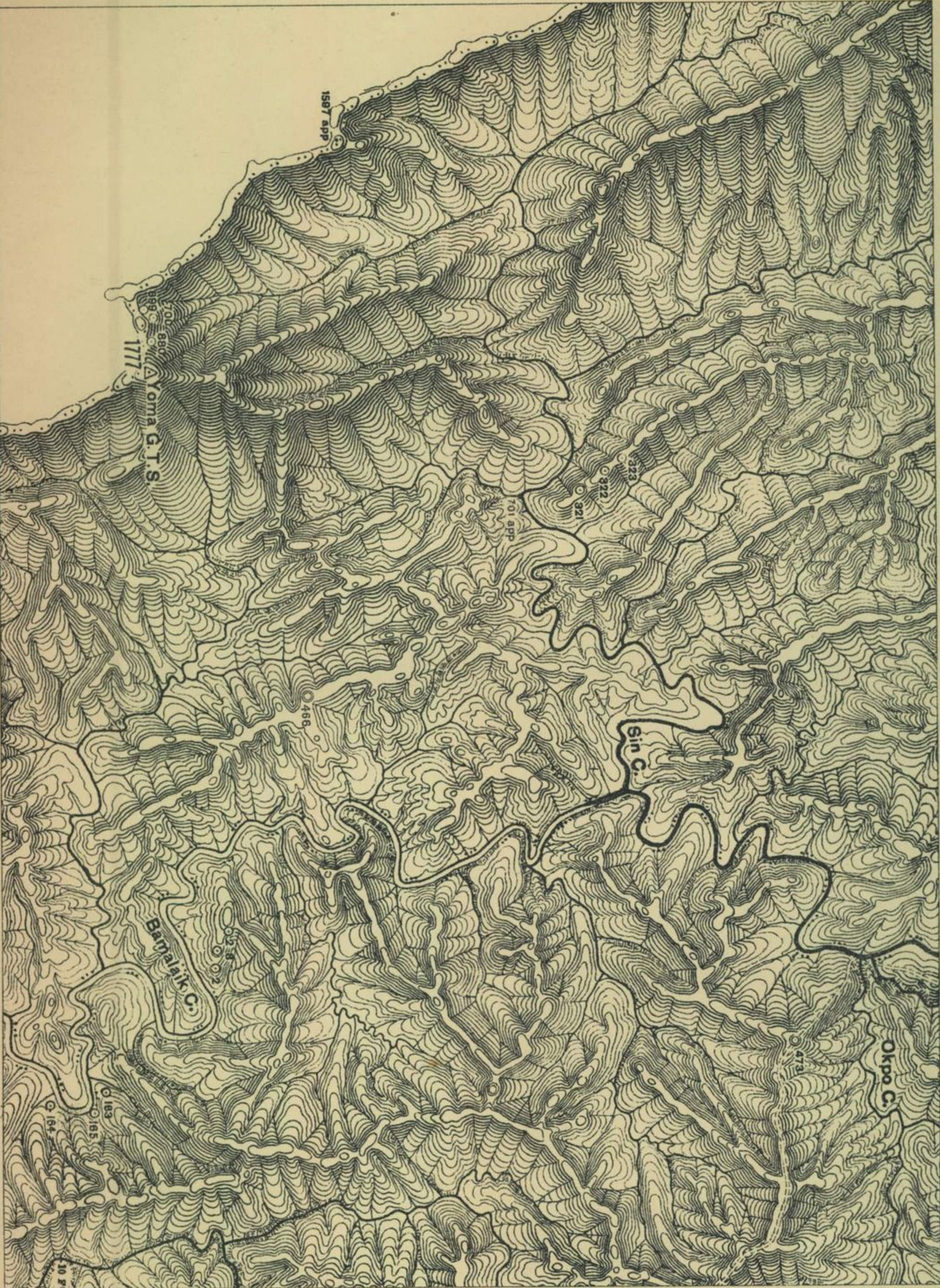
- N.B.—1. Ink used must be perfectly black, and all lines must be sharp and clean.
2. All drawing must be slightly finer than this copy.
3. Completed work must be examined under a magnifying glass, and any grey or broken lines touched up.
4. Keep surface of your paper covered as much as possible, avoid erasures and keep your paper clean.
5. The type on these Specimens is not to be taken as a guide to that now used on fair maps.



- N. B.—1. Ink used must be perfectly black and all lines must be sharp and clean.
2. All drawing must be slightly finer than this copy.
  3. Completed work must be examined under a magnifying glass, and any gray or broken lines touched up.
  4. Keep surface of your paper covered as much as possible. Avoid erasures and keep your paper clean.
  5. The type on this specimen is not to be taken as a guide to that now used on fair maps.

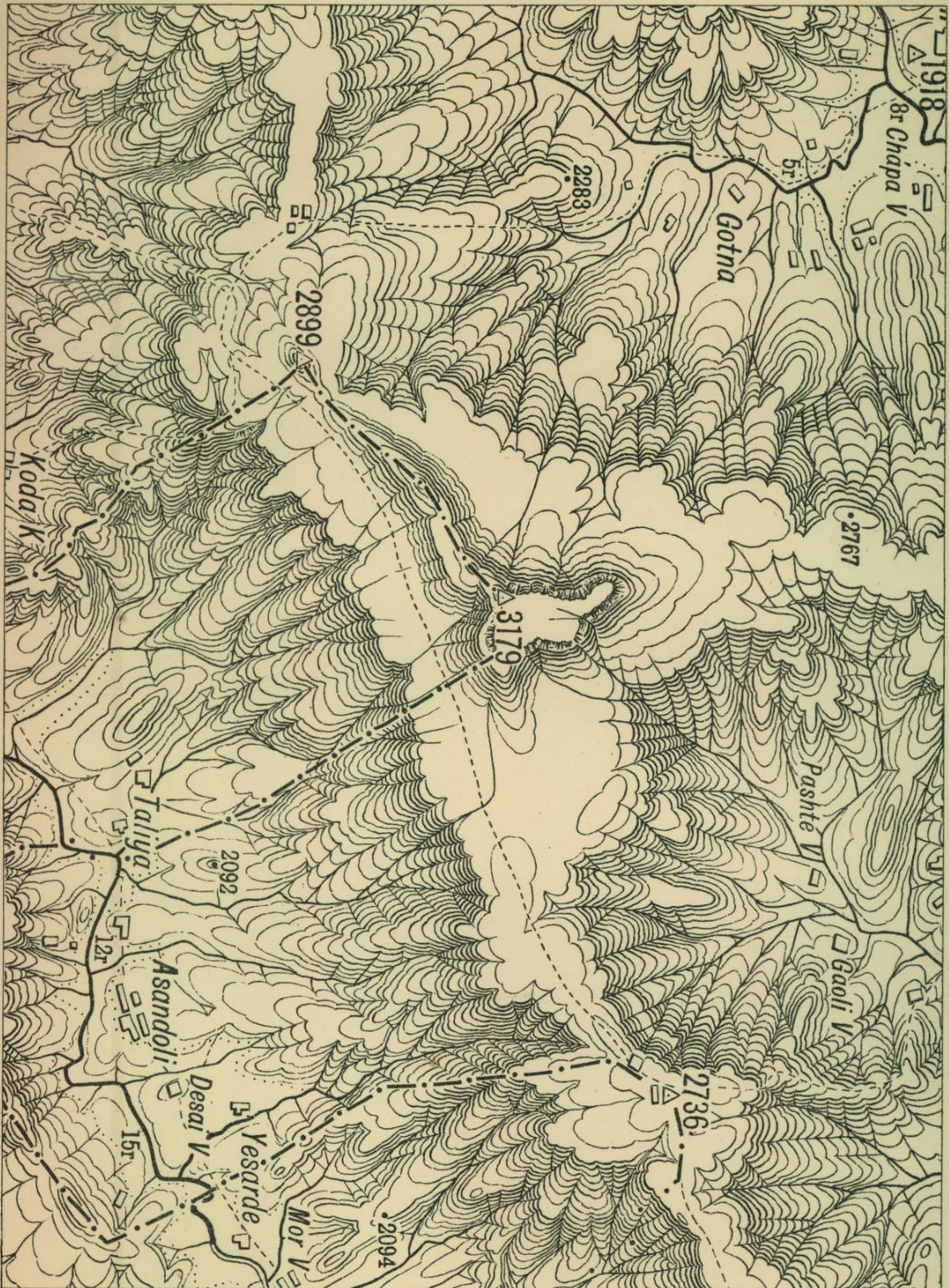
SPECIMEN OF 4-INCH MAPPING FOR REPRODUCTION.

Extract from Sheet 258 S.W.  $\frac{1}{g}$ , Burma Survey.



- N. B.
- 1 Ink used must be perfectly black and all lines must be sharp and clean.
  - 2 All drawing must be slightly finer than this copy.
  - 3 Completed work must be examined under a magnifying glass, and any gray or broken lines touched up.
  - 4 Keep surface of your paper covered as much as possible. Avoid erasures and keep your paper clean.
  - 5 The type on this specimen is not to be taken as a guide to that now used on fair maps.

Extract from Sheet No. 206, Bombay Survey.



N. B.—1. Ink used must be perfectly black and all lines must be sharp and clean.

2. All drawing must be slightly finer than this copy.

3. Completed work must be examined under a magnifying glass, and any gray or broken lines touched up.

4. Keep surface of your paper covered as much as possible. Avoid erasures and keep your paper clean.

5. The type on this specimen is not to be taken as a guide to that now used on fair maps.

SPECIMEN OF 2 INCH MAPPING FOR REDUCTION TO  $\frac{1}{2}$  SCALE.

Extract from Sheet No. 206, Bombay Survey.



- N. B.—1. Ink used must be perfectly black and all lines must be sharp and clean.  
2. All drawing must be slightly finer than this copy.  
3. Completed work must be examined under a magnifying glass, and any gray or broken lines touched up.  
4. Keep surface of your paper covered as much as possible. Avoid erasures and keep your paper clean.  
5. The type on this specimen is not to be taken as a guide to that now used on fair maps.



N. B.—1. Ink used must be perfectly black and all lines must be sharp and clean.

2. All drawing must be slightly finer than this copy.

3. Completed work must be examined under a magnifying glass, and any gray or broken lines touched up.

4. Keep surface of your paper covered as much as possible. Avoid erasures and keep your paper clean.

5. The type on this specimen is not to be taken as a guide to that now used on fair maps.

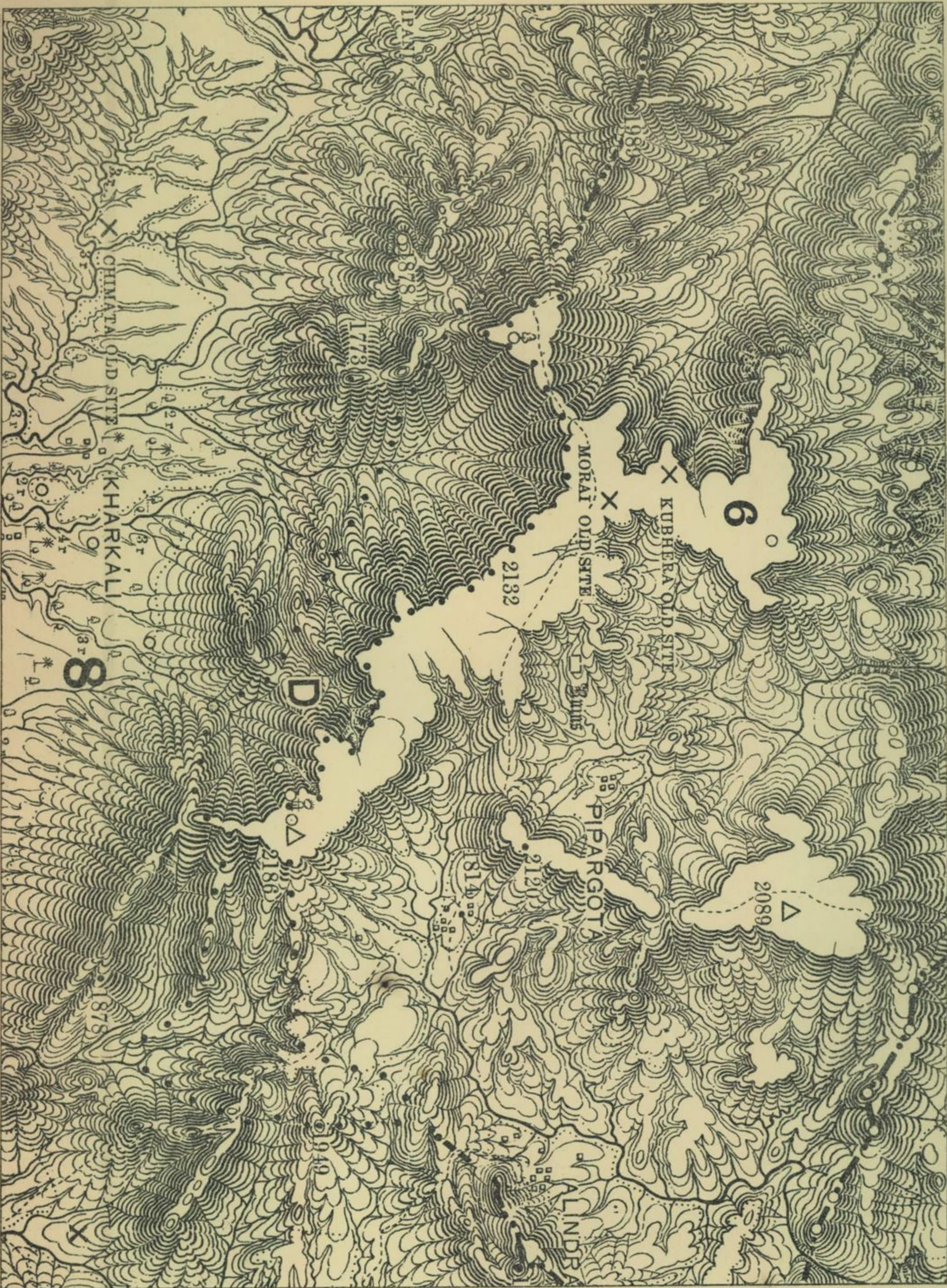




- N.B.—1. Ink used must be perfectly black and all lines must be sharp and clear.  
2. All drawing must be slightly finer than this copy.  
3. Completed work must be examined under a magnifying glass, and any gray or broken lines touched up.  
4. Keep surface of your paper covered as much as possible. Avoid erasures and keep your paper clean.  
5. The type on this specimen is not to be taken as a guide to that now used on fair maps.



- N. B.—1. Ink used must be perfectly black and all lines must be sharp and clean.  
2. All drawing must be slightly finer than this copy.  
3. Completed work must be examined under a magnifying glass, and any gray or broken lines touched up.  
4. Keep surface of your paper covered as much as possible. Avoid erasures and keep your paper clean.  
5. The type on this specimen is not to be taken as a guide to that now used on fair maps.



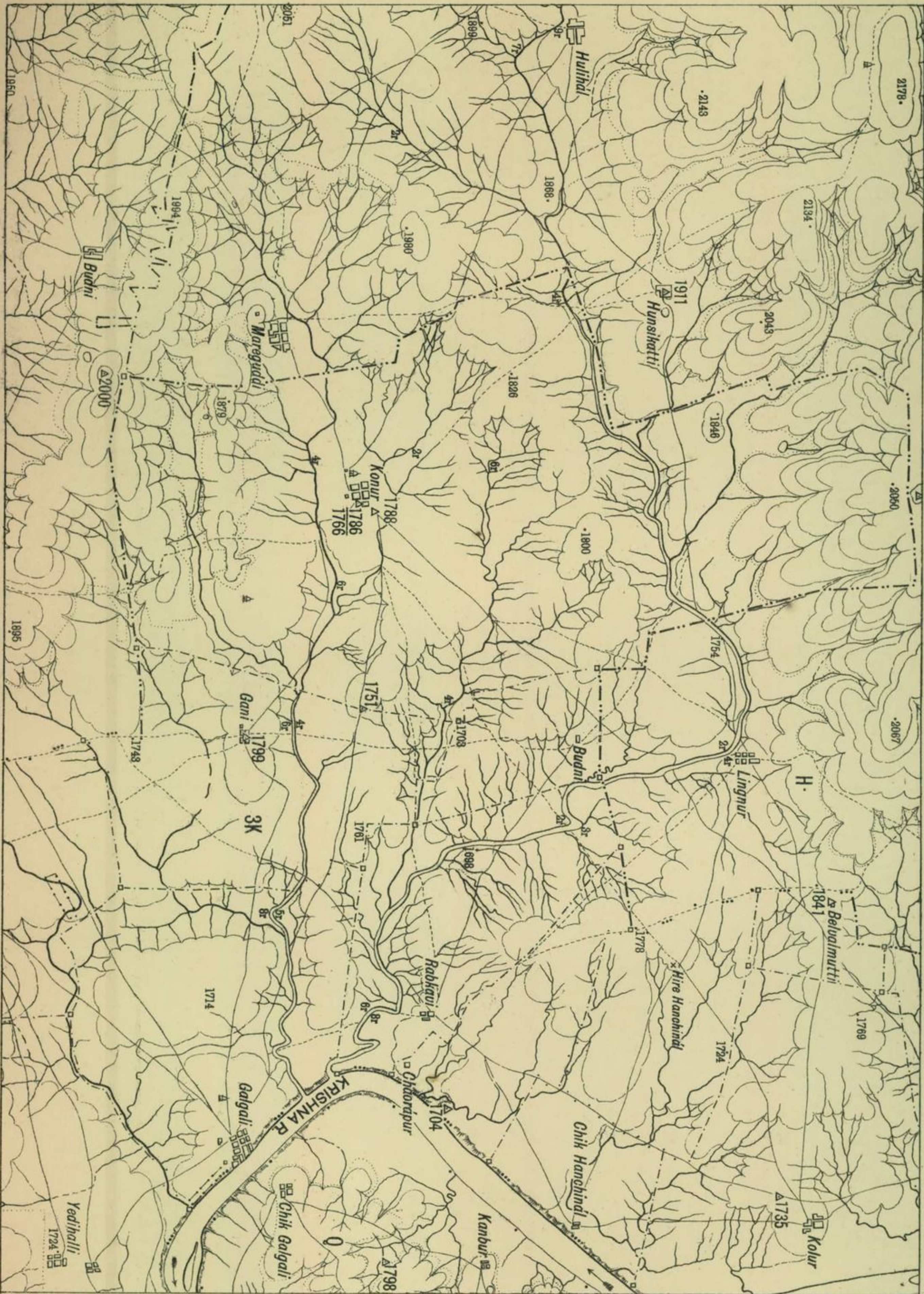
N. B.—1. Ink used must be perfectly black and all lines must be sharp and clean.

2. All drawing must be slightly finer than this copy.

3. Completed work must be examined under a magnifying glass, and any gray or broken lines touched up.

4. Keep surface of your paper covered as much as possible. Avoid erasures and keep your paper clean.

5. The type on this specimen is not to be taken as a guide to that now used on fair maps.



N. B.—1. Ink used must be perfectly black and all lines must be sharp and clean.

2. All drawing must be slightly finer than this copy.

3. Completed work must be examined under a magnifying glass, and any gray or broken lines touched up.

4. Keep surface of your paper covered as much as possible. Avoid erasures and keep your paper clean.

5. The type on this specimen is not to be taken as a guide to that now used on fair maps.











Extract from Sheet No. 340, Burma Survey.



N. B.—1. Ink used must be perfectly black and all lines must be sharp and clean.

2. All drawing must be slightly finer than this copy.

3. Completed work must be examined under a magnifying glass, and any gray or broken lines touched up.

4. Keep surface of your paper covered as much as possible. Avoid erasures and keep your paper clean.

5. The type on this specimen is not to be taken as a guide to that now used on fair maps.



- N. B.—1. Ink used must be perfectly black and all lines must be sharp and clean.  
2. All drawing must be slightly finer than this copy.  
3. Completed work must be examined under a magnifying glass, and any gray or broken lines touched up.  
4. Keep surface of your paper covered as much as possible. Avoid erasures and keep your paper clean.  
5. The type on this specimen is not to be taken as a guide to that now used on fair maps.



- N. B.—1. Ink used must be perfectly black and all lines must be sharp and clean.  
2. All drawing must be slightly finer than this copy.  
3. Completed work must be examined under a magnifying glass, and any gray or broken lines touched up.  
4. Keep surface of your paper covered as much as possible. Avoid erasures and keep your paper clean.  
5. The type on this specimen is not to be taken as a guide to that now used on fair maps.



- N. B.
- 1 Ink used must be perfectly black and all lines must be sharp and clean.
  - 2 All drawings must be slightly finer than this copy.
  - 3 Completed work must be examined under a magnifying glass, and any gray or broken lines touched up.
  - 4 Keep surface of your paper covered as much as possible. Avoid erasures and keep your paper clean.
  - 5 The type on this specimen is not to be taken as a guide to that now used on fair maps.



N. B. 1 Ink used must be perfectly black and all lines must be sharp and clean.

2 All drawing must be slightly finer than this copy.

3 Completed work must be examined under a magnifying glass, and any gray or broken lines touched up.

4 Keep surface of your paper covered as much as possible. Avoid erasures and keep your paper clean.

5 The type on this specimen is not to be taken as a guide to that now used on fair maps.

SPECIMEN OF 1 INCH MAPPING FOR REPRODUCTION.

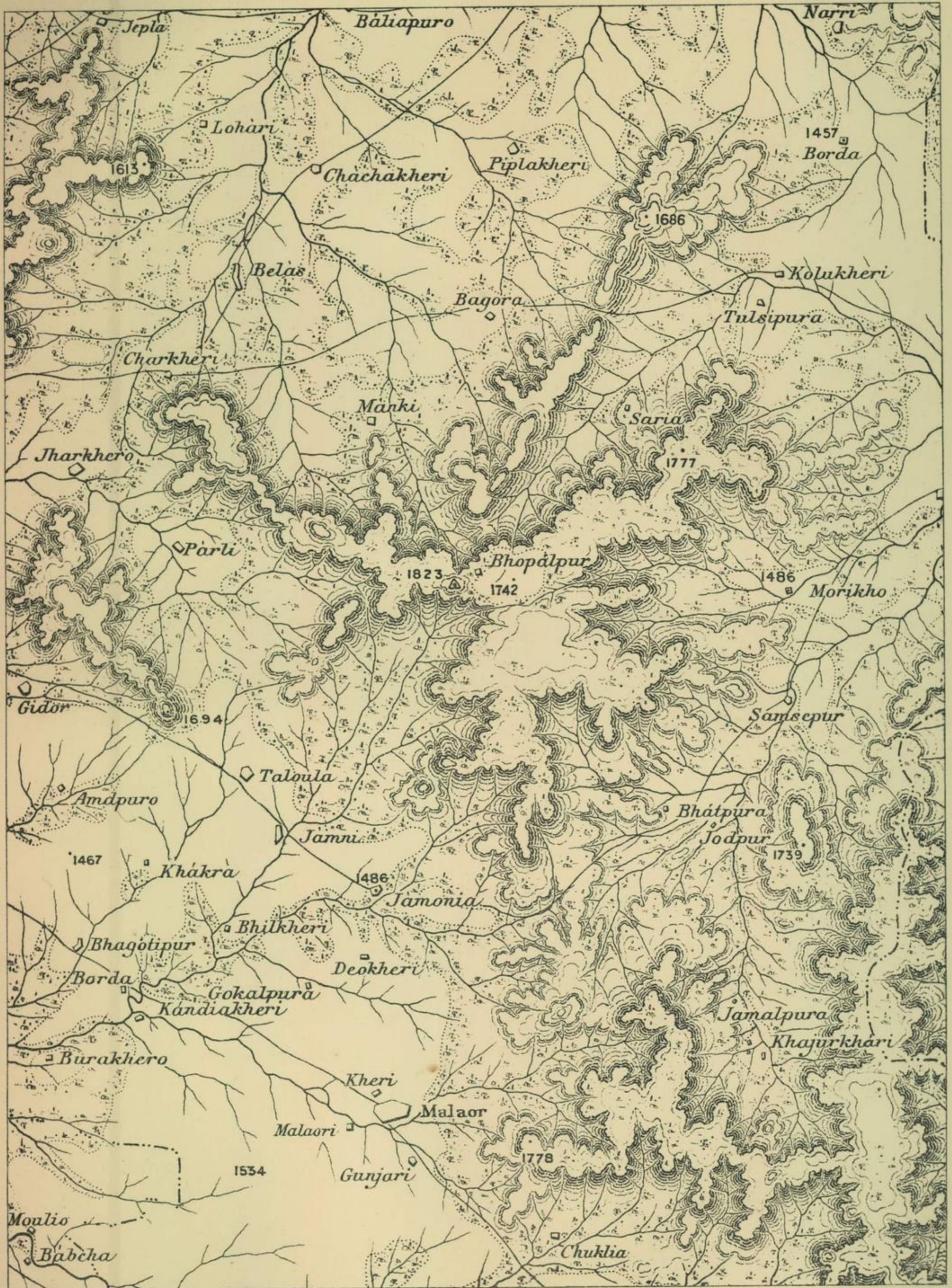
Extract from Sheet No. 240, Bombay Survey.



- N. B.—1. Ink used must be perfectly black and all lines must be sharp and clean.  
2. All drawing must be slightly finer than this copy.  
3. Completed work must be examined under a magnifying glass, and any gray or broken lines touched up.  
4. Keep surface of your paper covered as much as possible. Avoid erasures and keep your paper clean.  
5. The type on this specimen is not to be taken as a guide to that now used on fair maps.

SPECIMEN OF HAND-PRINTING.

Extract from Sheet No 353, C. I. & Rajputana Survey.



- N. B.—1. Ink used must be perfectly black and all lines must be sharp and clean.  
 2. All drawing must be slightly finer than this copy.  
 3. Completed work must be examined under a magnifying glass, and any gray or broken lines touched up.  
 4. Keep surface of your paper covered as much as possible. Avoid erasures and keep your paper clean.  
 5. The type on this specimen is not to be taken as a guide to that now used on fair maps.



N. B.—1. Ink used must be perfectly black and all lines must be sharp and clean.

- 2. All drawing must be slightly finer than this copy.
- 3. Completed work must be examined under a magnifying glass, and any gray or broken lines touched up.
- 4. Keep surface of your paper covered as much as possible. Avoid erasures and keep your paper clean.
- 5. The type on this specimen is not to be taken as a guide to that now used on fair maps.





N. B.—1. Ink used must be perfectly black and all lines must be sharp and clean.

2. All drawing must be slightly finer than this copy.

3. Completed work must be examined under a magnifying glass, and any gray or broken lines touched up.

4. Keep surface of your paper covered as much as possible. Avoid erasures and keep your paper clean.

5. The type on this specimen is not to be taken as a guide to that now used on fair maps.



N. B.—1. Ink used must be perfectly black and all lines must be sharp and clean.

2. All drawing must be slightly finer than this copy.

3. Completed work must be examined under a magnifying glass, and any gray or broken lines touched up.

4. Keep surface of your paper covered as much as possible. Avoid erasures and keep your paper clean.

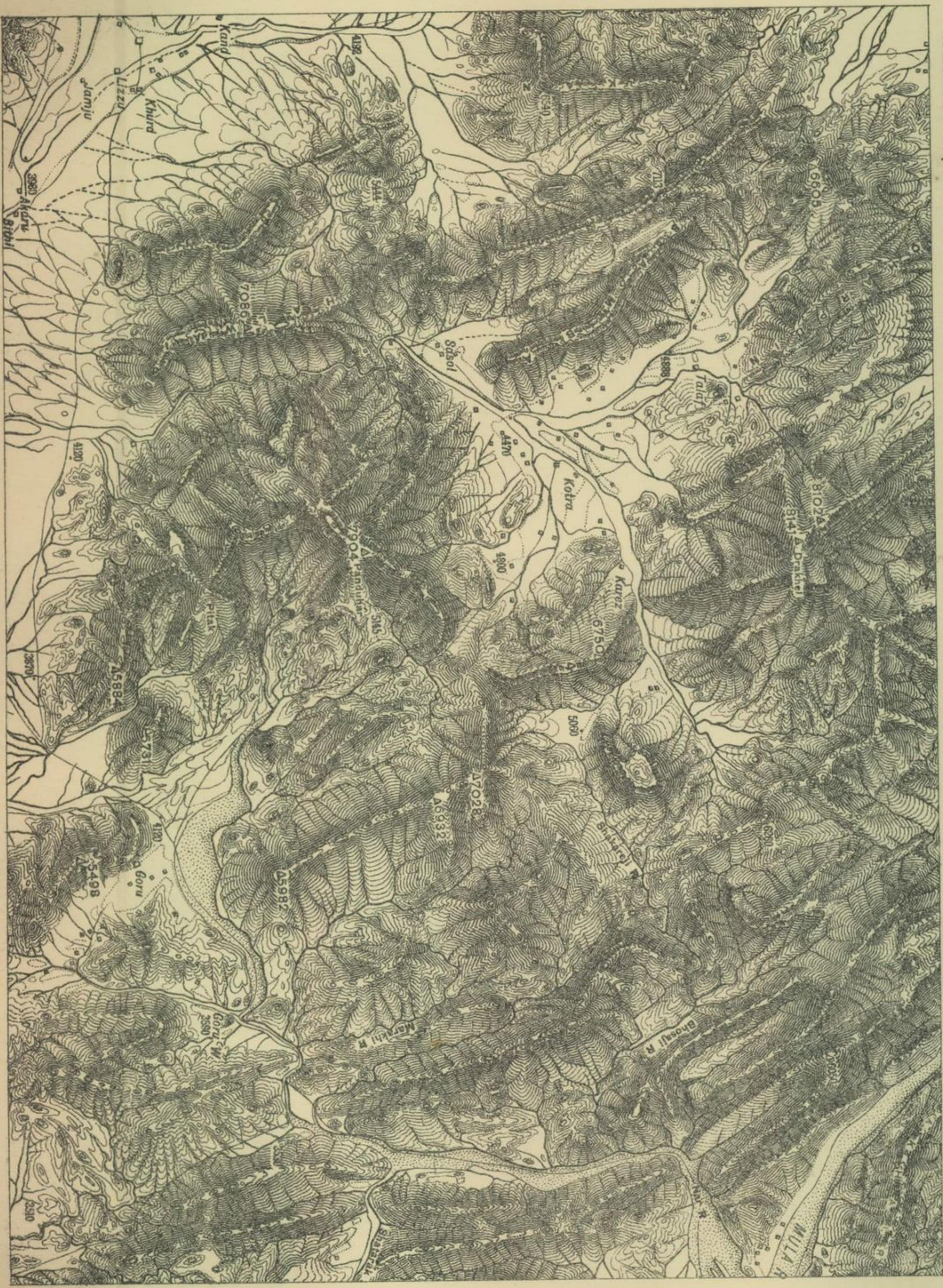
5. The type on this specimen is not to be taken as a guide to that now used on fair maps.



- N. B.—1. Ink used must be perfectly black and all lines must be sharp and clean.
2. All drawing must be slightly finer than this copy.
  3. Completed work must be examined under a magnifying glass, and any gray or broken lines touched up.
  4. Keep surface of your paper covered as much as possible. Avoid erasures and keep your paper clean.
  5. The type on this specimen is not to be taken as a guide to that now used on fair maps.

SPECIMEN OF 1 INCH MAPPING FOR REPRODUCTION.

Extract from Sheet No. 361, N.-W. Trans-Frontier.



- N. B.—1. Ink used must be perfectly black and all lines must be sharp and clean.  
2. All drawing must be slightly finer than this copy.  
3. Completed work must be examined under a magnifying glass and any gray or broken lines touched up.  
4. Keep surface of your paper covered as much as possible. Avoid erasures and keep your paper clean.  
5. The type on this specimen is not to be taken as a guide to that now used on fair maps.

SPECIMEN OF 1/4 INCH MAPPING FOR REPRODUCTION.

Extract from Sheet No. 861, N.-W. Trans-Frontier.



- N. B.—1. Ink used must be perfectly black and all lines must be sharp and clean.  
2. All drawing must be slightly finer than this copy.  
3. Completed work must be examined under a magnifying glass, and any gray or broken lines touched up.  
4. Keep surface of your paper covered as much as possible. Avoid erasures and keep your paper clean.  
5. The type on this specimen is not to be taken as a guide to that now used on fair maps.

SPECIMEN OF 1/4 INCH MAPPING FOR REPRODUCTION.

PLATE XXXVI

Extract from Sheet No. 349, N. W. Trans-Frontier.



- N. B.—1. Ink used must be perfectly black and all lines must be sharp and clean.  
2. All drawing must be slightly finer than this copy.  
3. Completed work must be examined under a magnifying glass, and any gray or broken lines touched up.  
4. Keep surface of your paper covered as much as possible. Avoid erasures and keep your paper clean.  
5. The type on this specimen is not to be taken as a guide to that now used on fair maps.



- N. B.—1. Ink used must be perfectly black and all lines must be sharp and clean.  
 2. All drawing must be slightly finer than this copy.  
 3. Completed work must be examined under a magnifying glass, and any gray or broken lines touched up.  
 4. Keep surface of your paper covered as much as possible. Avoid erasures and keep your paper clean.  
 5. The type on this specimen is not to be taken as a guide to that now used on fair maps.

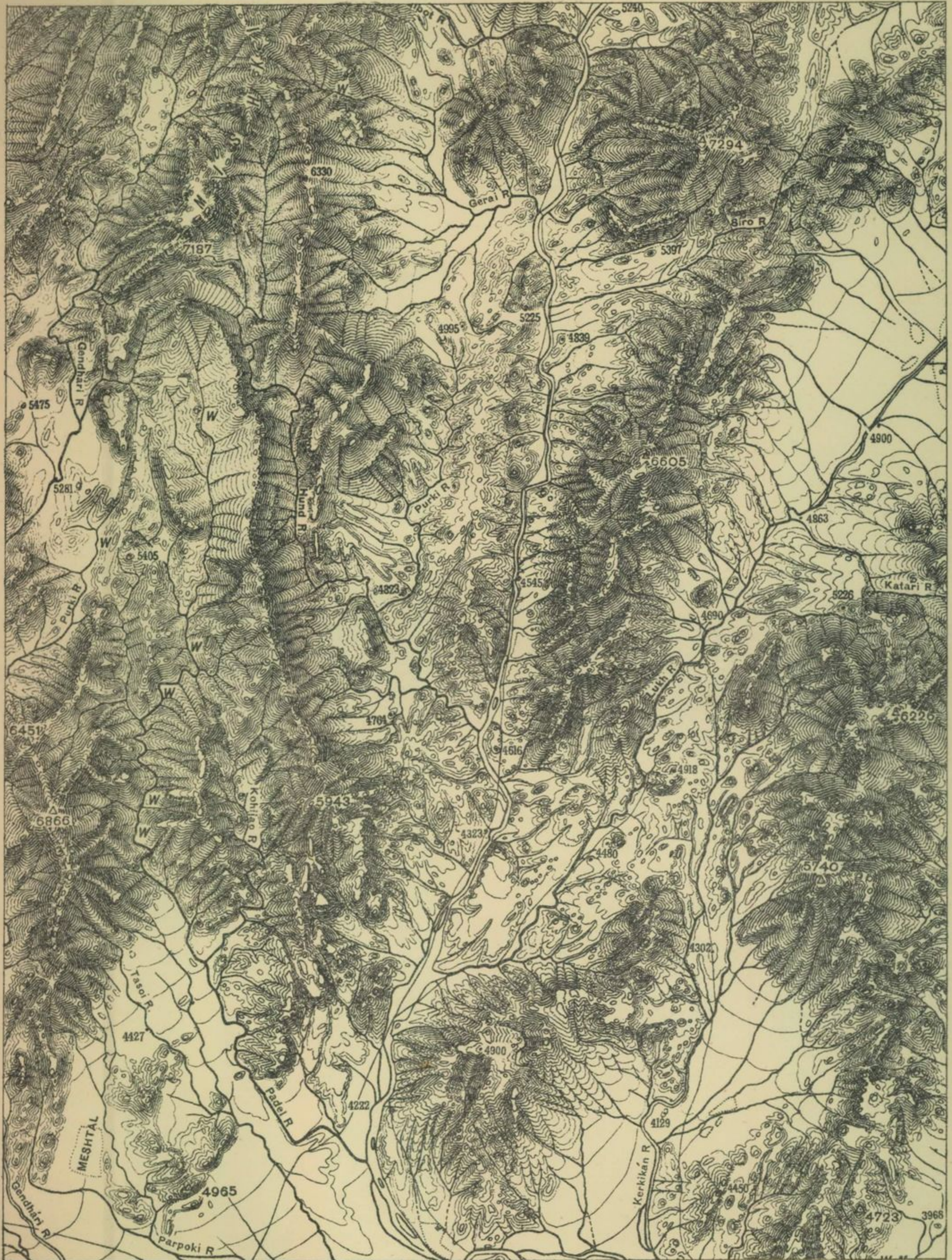
SPECIMEN OF 1/2 INCH MAPPING FOR REPRODUCTION.

Extract from Sheet No. 439, N. W. Trans-Frontier.



- N. B.—1. Ink used must be perfectly black and all lines must be sharp and clean.  
 2. All drawing must be slightly finer than this copy.  
 3. Completed work must be examined under a magnifying glass, and any gray or broken lines touched up.  
 4. Keep surface of your paper covered as much as possible. Avoid erasures and keep your paper clean.  
 5. The type on this specimen is not to be taken as a guide to that now used on fair maps.





- N. B.—1. Ink used must be perfectly black and all lines must be sharp and clean.  
 2. All drawing must be slightly finer than this copy.  
 3. Completed work must be examined under a magnifying glass, and any gray or broken lines touched up.  
 4. Keep surface of your paper covered as much as possible. Avoid erasures and keep your paper clean.  
 5. The type on this specimen is not to be taken as a guide to that now used on fair maps.

SPECIMEN OF VERTICAL HILL DRAWING FROM 1 TO 1 REDUCTION.

Extract from Hill Sheet No. 1 of 32-Mile Map of India.

PLATE XL.

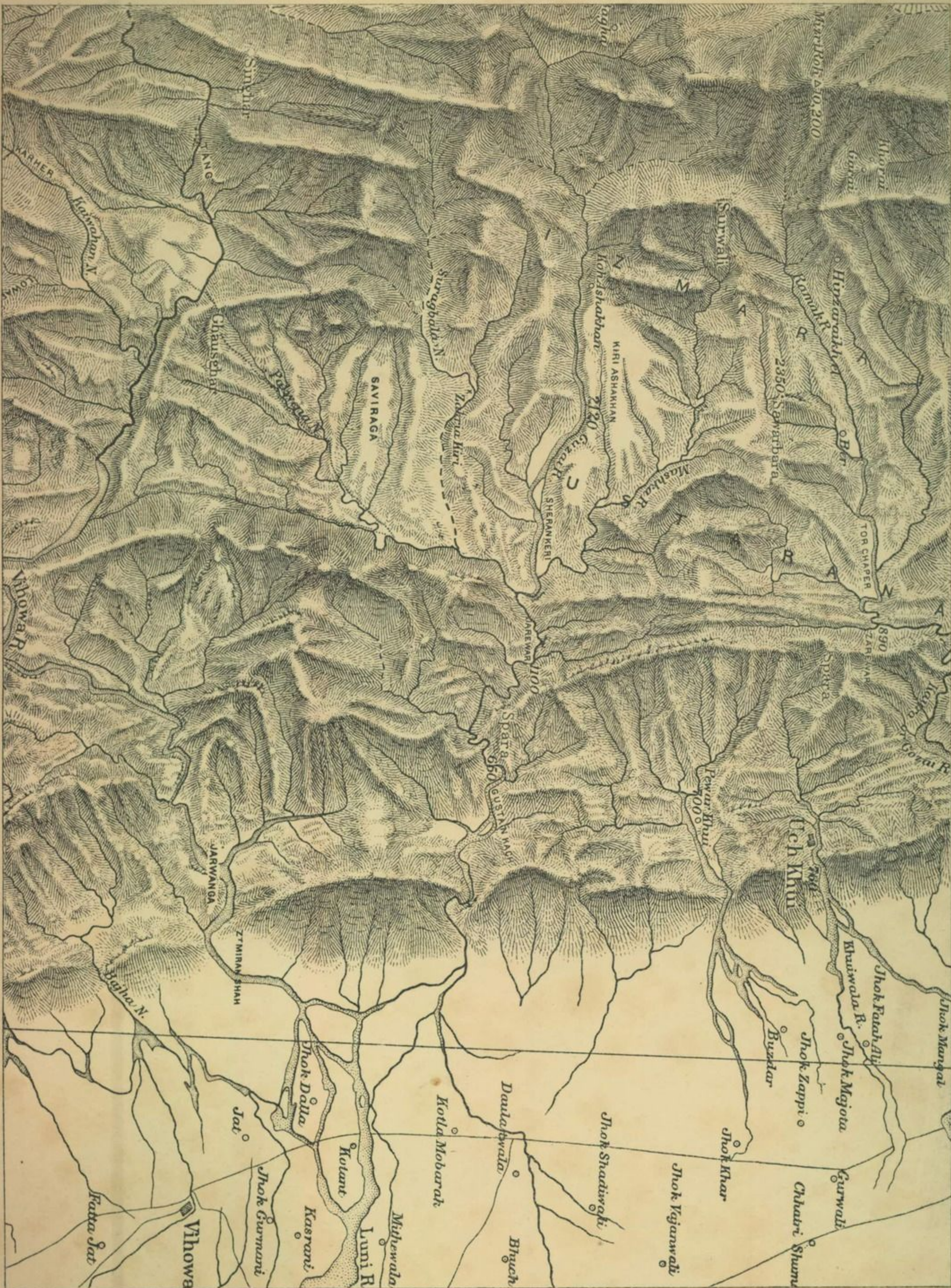


- N. B.—1. Ink used must be perfectly black and all lines must be sharp and clean.
2. All drawing must be slightly finer than this copy.
  3. Completed work must be examined under a magnifying glass, and any gray or broken lines touched up.
  4. Keep surface of your paper covered as much as possible. Avoid erasures and keep your paper clean.



- N. R.—1. Ink used must be perfectly black and all lines must be sharp and clean.
2. All drawing must be slightly finer than this copy.
  3. Completed work must be examined under a magnifying glass, and any gray or broken lines touched up.
  4. Keep surface of your paper covered as much as possible. Avoid erasures and keep your paper clean.
  5. The type on this specimen is not to be taken as a guide to that now used on fair maps.

No. 790, 3. 1.—July 19.—189.



- N. B.—1. Ink used must be perfectly black and all lines must be sharp and clean.  
 2. All drawing must be slightly finer than this copy.  
 3. Completed work must be examined under a magnifying glass, and any gray or broken lines touched up.  
 4. Keep surface of your paper covered as much as possible. Avoid erasures and keep your paper clean.  
 5. The type on this specimen is not to be taken as a guide to that now used on fair maps.

SPECIMEN OF VERTICAL HILL SHADING FROM  $\frac{1}{4}$  TO  $\frac{1}{4}$  REDUCTION.

PLATE XLIII

Extract from Sheet No. 1, Railway Map of India.



- N. B.—1. Ink used must be perfectly black and all lines must be sharp and clean.  
2. All drawing must be slightly finer than this copy.  
3. Completed work must be examined under a magnifying glass, and any gray or broken lines touched up.  
4. Keep surface of your paper covered as much as possible. Avoid erasures and keep your paper clean.

SPECIMEN OF VERTICAL HILL SHADING FROM  $\frac{1}{4}$  TO  $\frac{1}{4}$  REDUCTION.

Extract from Sheet No. 4, Railway Map of India.



- N. B. -1 Ink used must be perfectly black and all lines must be sharp and clean.
2. All drawing must be slightly finer than this copy.
  3. Completed work must be examined under a magnifying glass, and any gray or broken lines touched up.
  4. Keep surface of your paper covered as much as possible. Avoid erasures and keep your paper clean.